



Statens vegvesen

**Norwegian
Public Roads Administration**

Being a serviceprovider to
[Mypage.norway.no](https://mypage.norway.no)

By

Dag Efjestad

Statens vegvesen

Norwegian public roads administration

- **Vision:**
On the road to a better society
- **The objective:**
To develop and maintain a safe, eco-friendly and efficient transport system.



Statens vegvesen

Norwegian public roads administration

What we do?

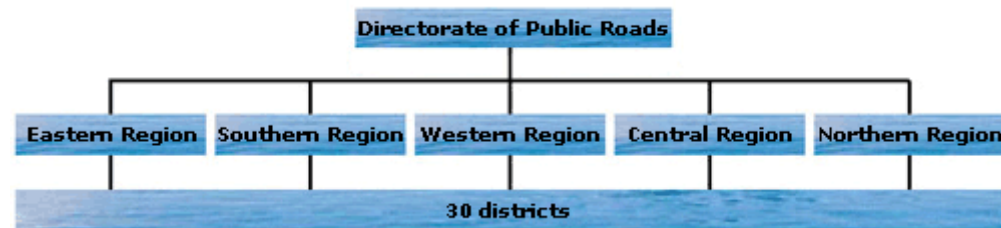
- Planning, construction and operation of the national and county road networks
- Vehicle inspection and requirements
- Driver training and licensing



Statens vegvesen

Norwegian public roads administration

- Organized under the Ministry of Transport and Communications.



- Approximate 5000 employees

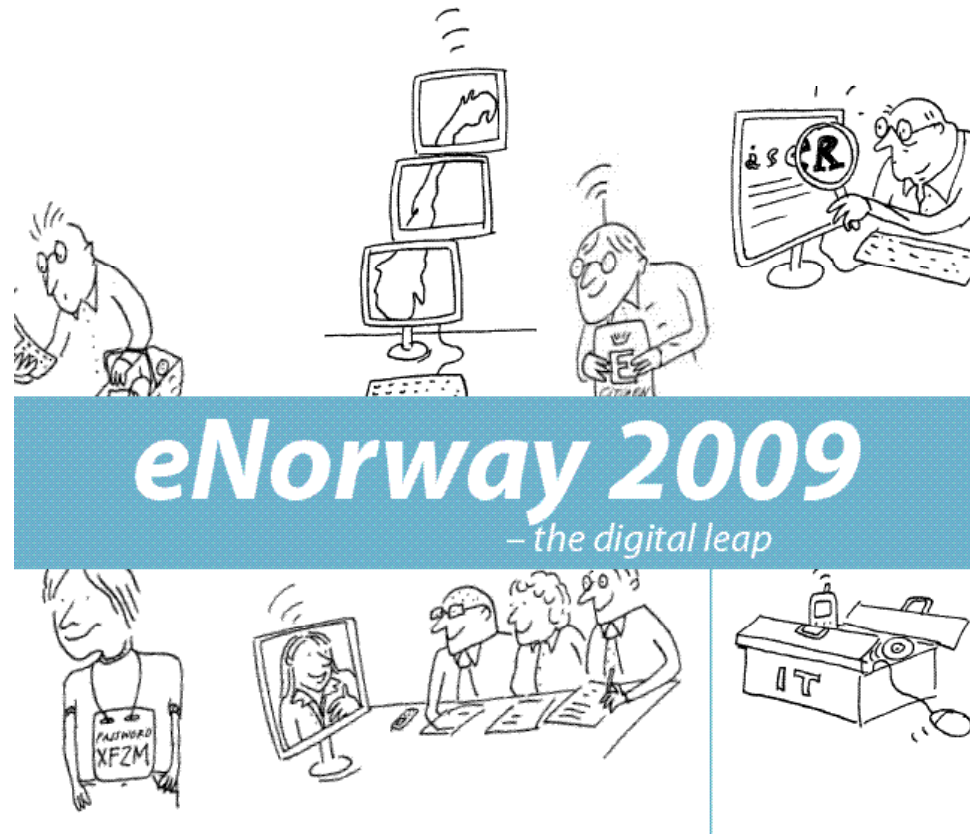


Why e-services

- Earn money
- Moore equal treatment
- Required -
 - Government, parliament
 - Citizens
 - Organizations



Government directions



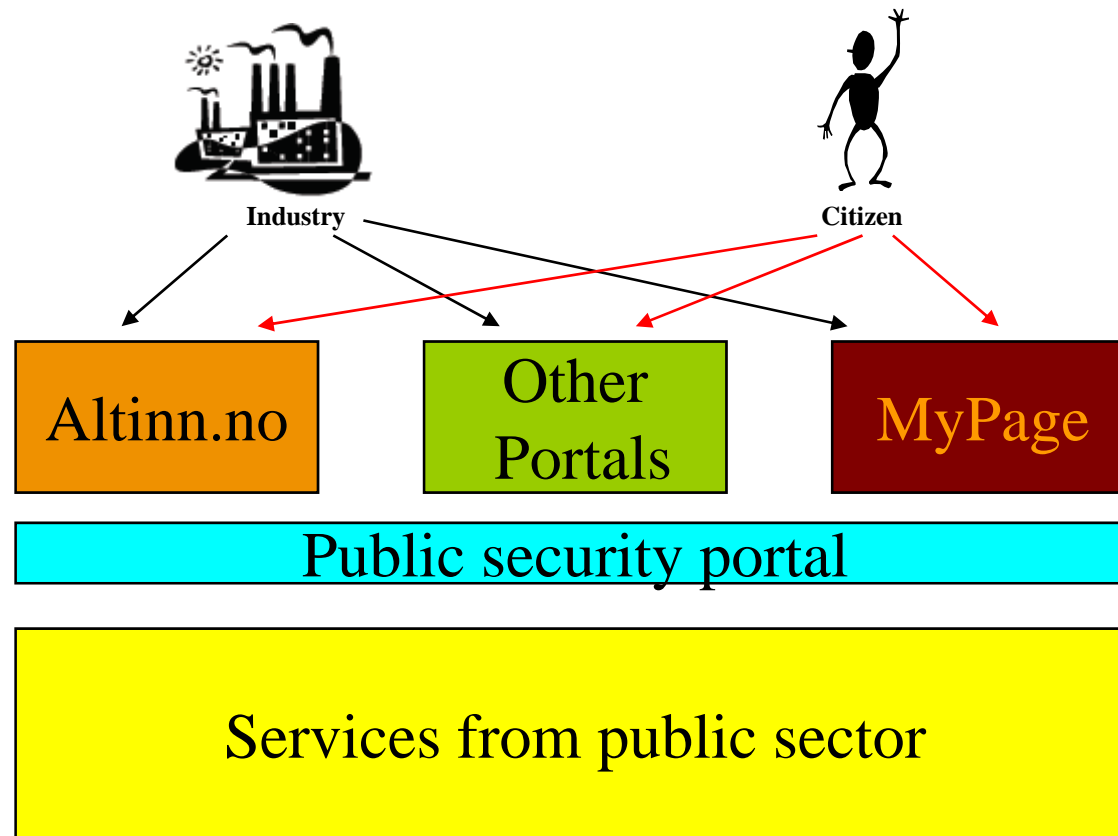
http://www.regjeringen.no/upload/kilde/mod/rap/2005/0015/ddd/pdfv/254956-enorway_2009.pdf



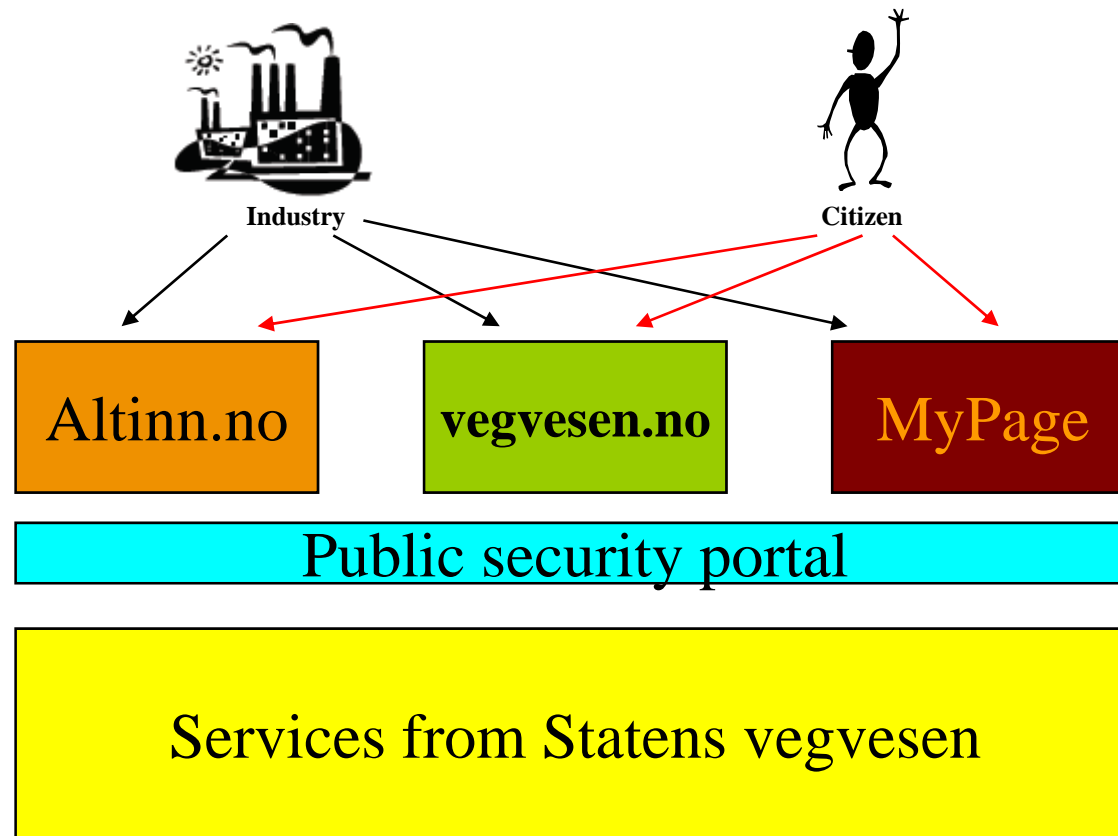
Statens vegvesen

Norwegian Public Roads Administration

eNorway 2009



eNorway 2009



Interactions with the citizen

- Main areas for e-services against the citizen:
 - Vehicles
 - Driver licenses and driver cards
 - Traffic and road information
 - Permits (road, transport, etc)
 - New roads
 - Traffic safety



Types of e-services

- Information requests – I want to know ...
- Transactions – I want to do...
- Messages/information – We want to inform you...
- Helpdesk/Chat – I want to talk to...



Type of service interfaces for Mypage

- Web service
 - retrieve information
- Message service (email)
 - send or push messages
- Web based service – Url link to a service with single sign on.
 - Do something at our web site



Impact on IT-infrastructure

- 24*7 all year
- Response time
- Surveillance
- Support
- SLA and other contracts
- New architecture elements
- Impact on internal standards
- SOA
- Sourcing



Web service – retrieve information

Requirements:

- All information about a citizen should be available on the Internet.
- All lookups happens with the citizen personal identification number
- Common "SLA"
- Standardized interface/contract:
 - WS-I Basic profile
 - WS-I basic security profile
 - Standardized messages for request and faults
 - NDR for Web services
 - Common information model.
- Develop XSL for presentation in mypage



Messages

- Push information to the citizen
 - Replacement for snail mail
 - Interfaces:
 - SMTP with TLS
 - LDAPS for user lookup
 - Messages in text or XML
 - Attachments in PDF
- Don't support messages that are not structured – email.

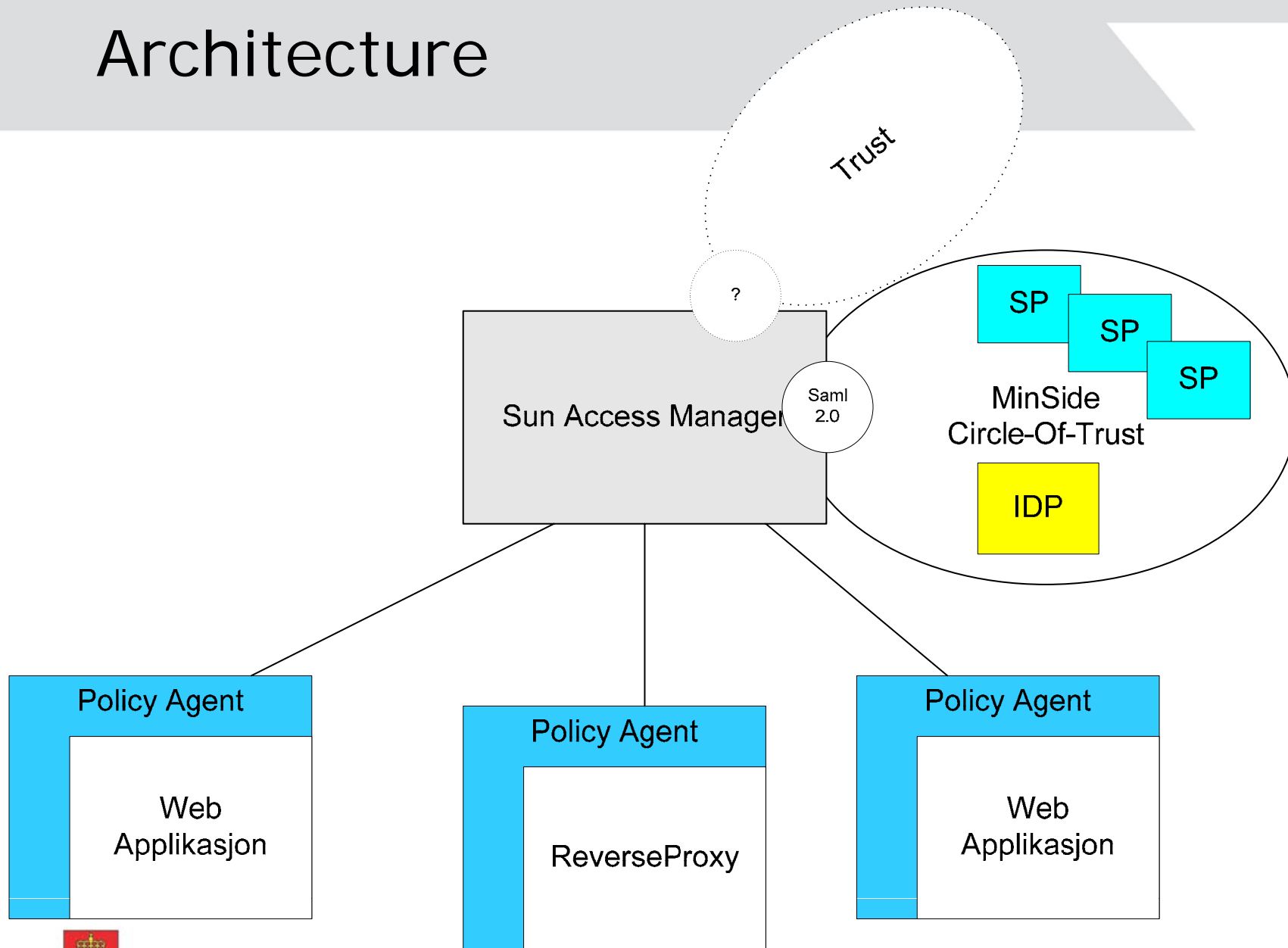


Web based service/ transaction service

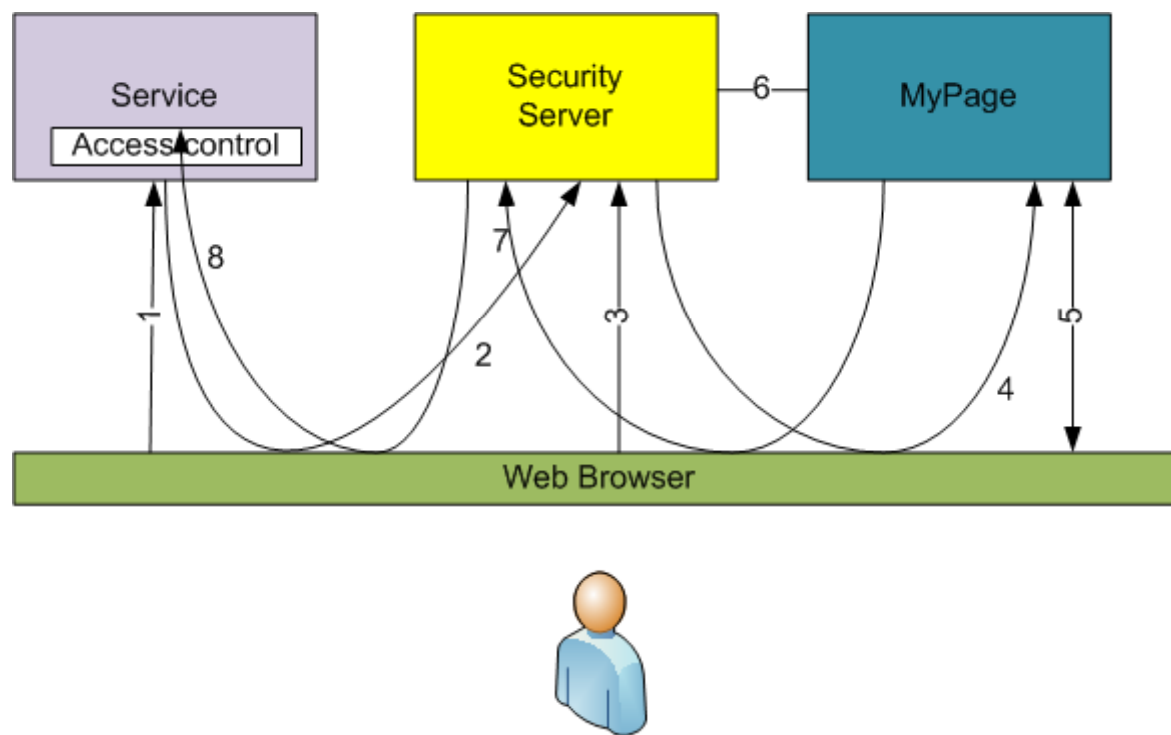
- Protected by SAMLv2 and HTTPS
- Service that are hosted on our portal
- Must follow Mypage design guidelines
- Common SLA
- Surveillance
- Support of English, SAMI, Bokmål and Nynorsk
- From the SAML assertion we get citizen personal identification number and language.



Architecture



SAMLv2 Scenario

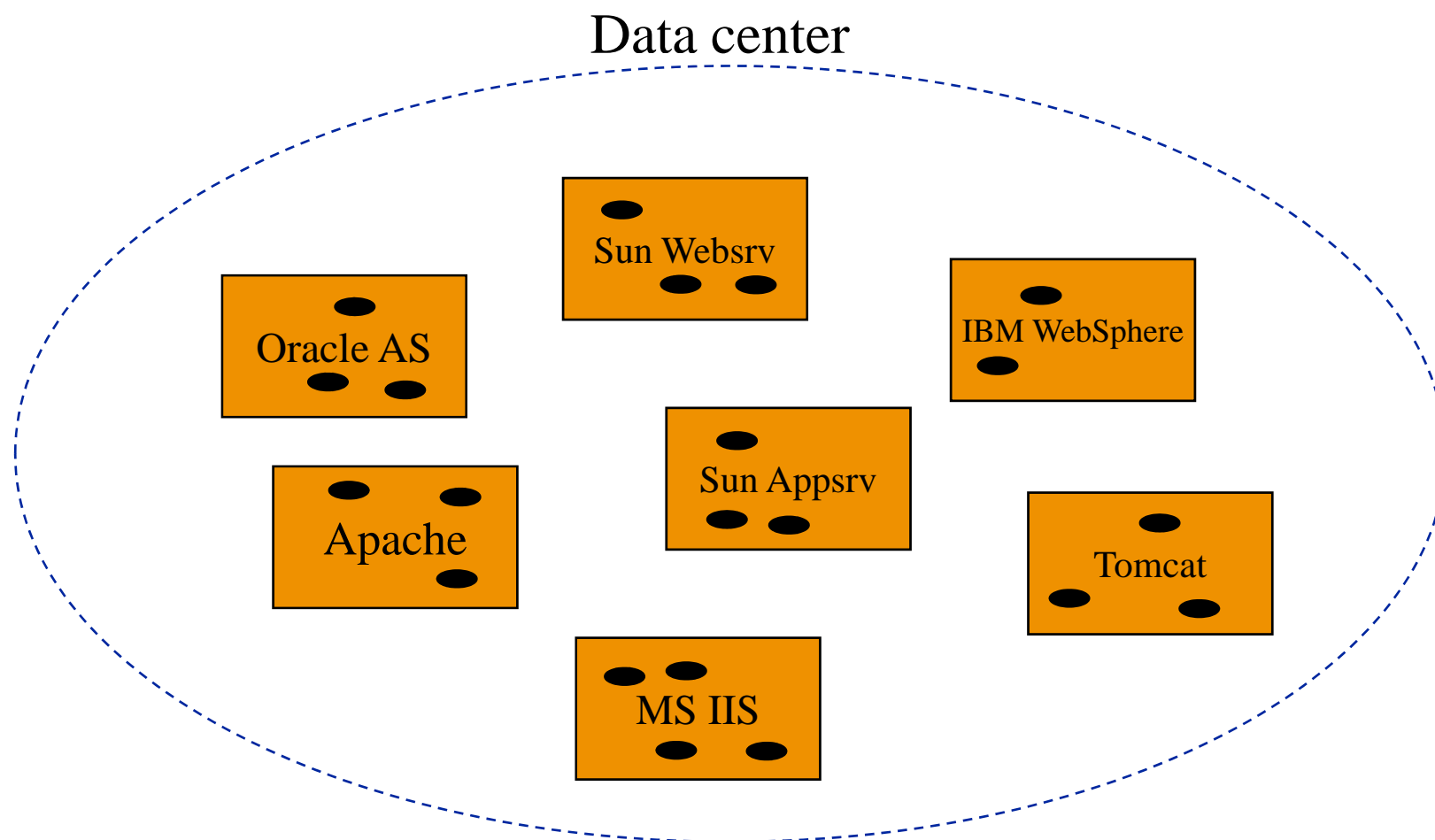


Extras..

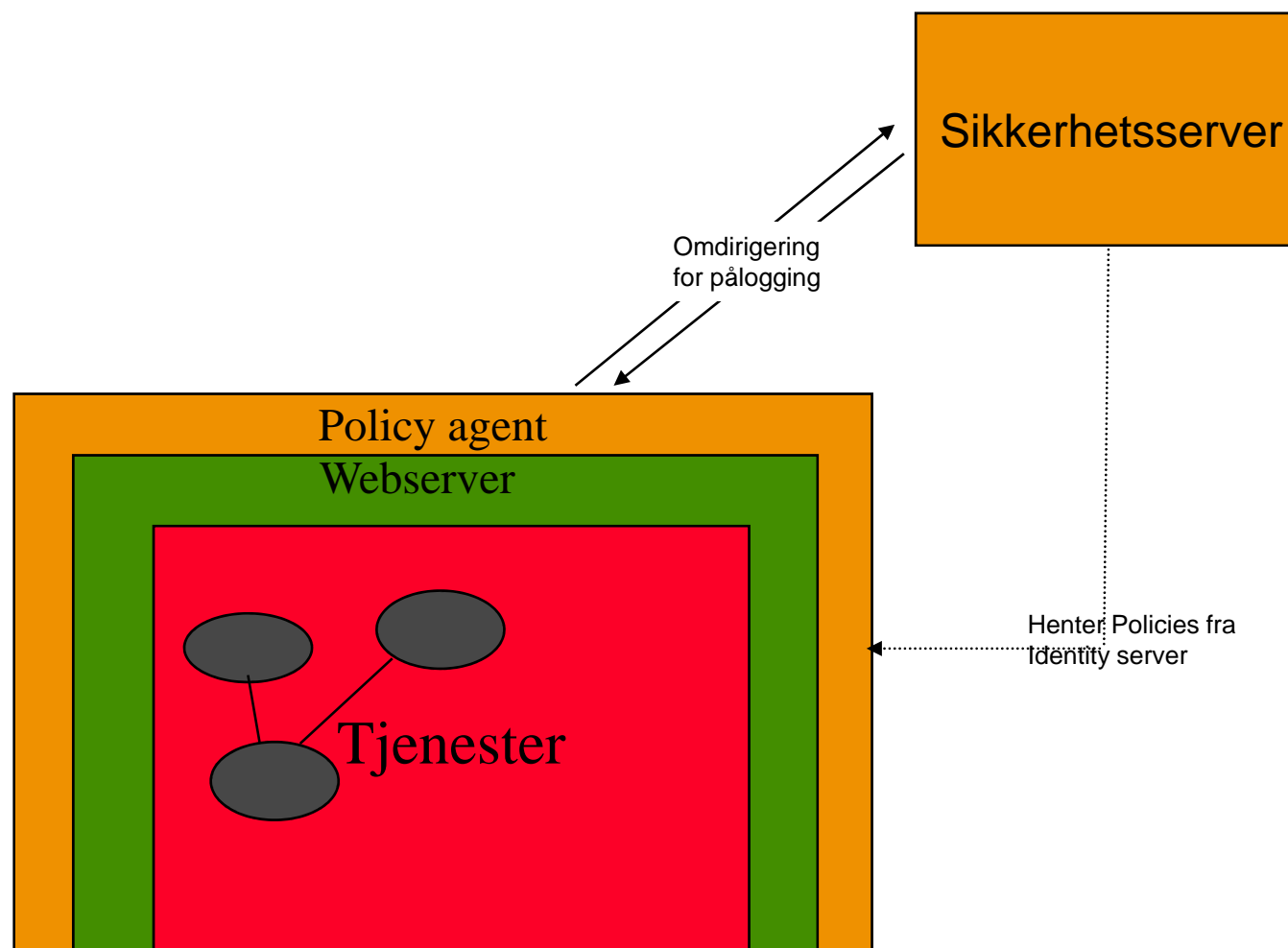
- Outsourcing
- Protection of internal web applications
- Use of policies in applications



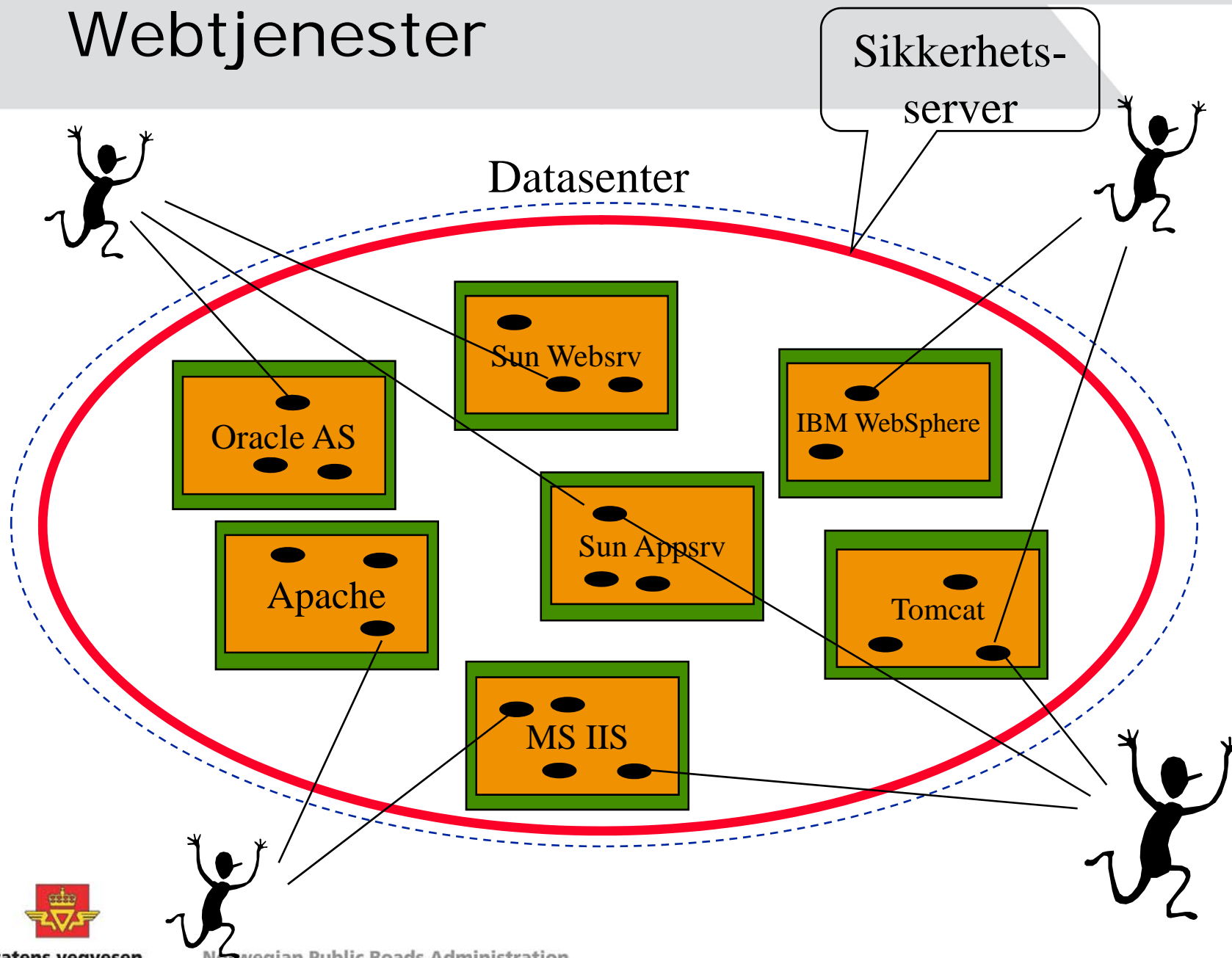
Webtjenester



Policy agent (PEP)



Webtjenester





Questions?



Statens vegvesen

Norwegian Public Roads Administration