

GEISINGER



The Security Division of EMC

*Improving Patient Care
Leveraging RSA Federated Identity Manager*

David Young
IT Director of Web Services

About Geisinger Health System

- ▶ Founded 1915, serves 41 county region in NE Pennsylvania
- ▶ 2007 Revenues of \$2.0 billion with 12,000 employees
- ▶ 13 years experience with Electronic Medical Records (EMR)
- ▶ 6,000 concurrent clinicians with access to EMR
- ▶ 100,000 patients have secure access to their Geisinger EMR
- ▶ Currently in the last year of 3-year federally funded grant to create a Regional Health Information Exchange
 - 53 hospitals in 31 counties
 - 2,500,000 patients in record locator
 - 50 emergency physicians in 3 hospitals live

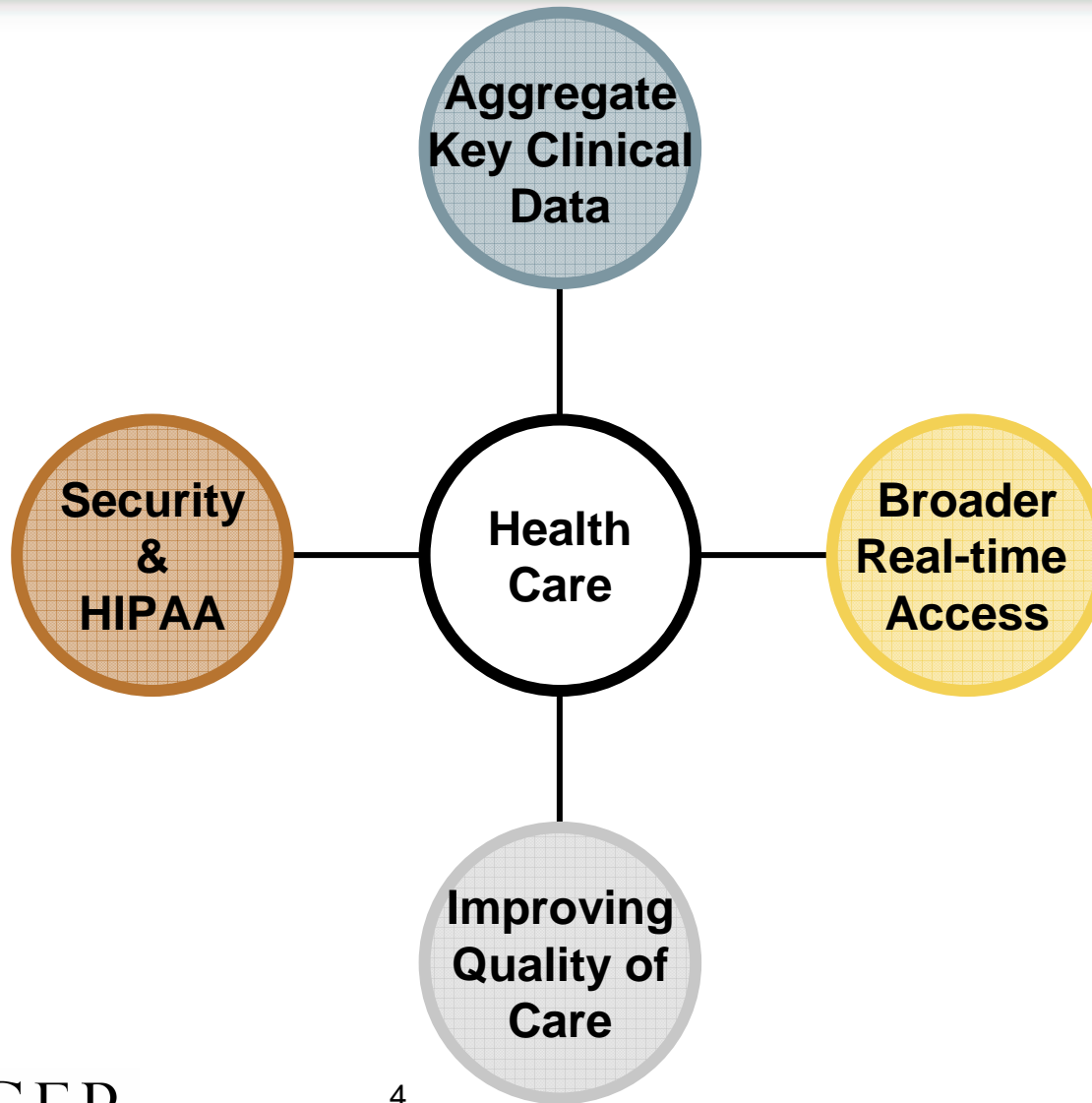


Industry Survey Underscores Major Trends

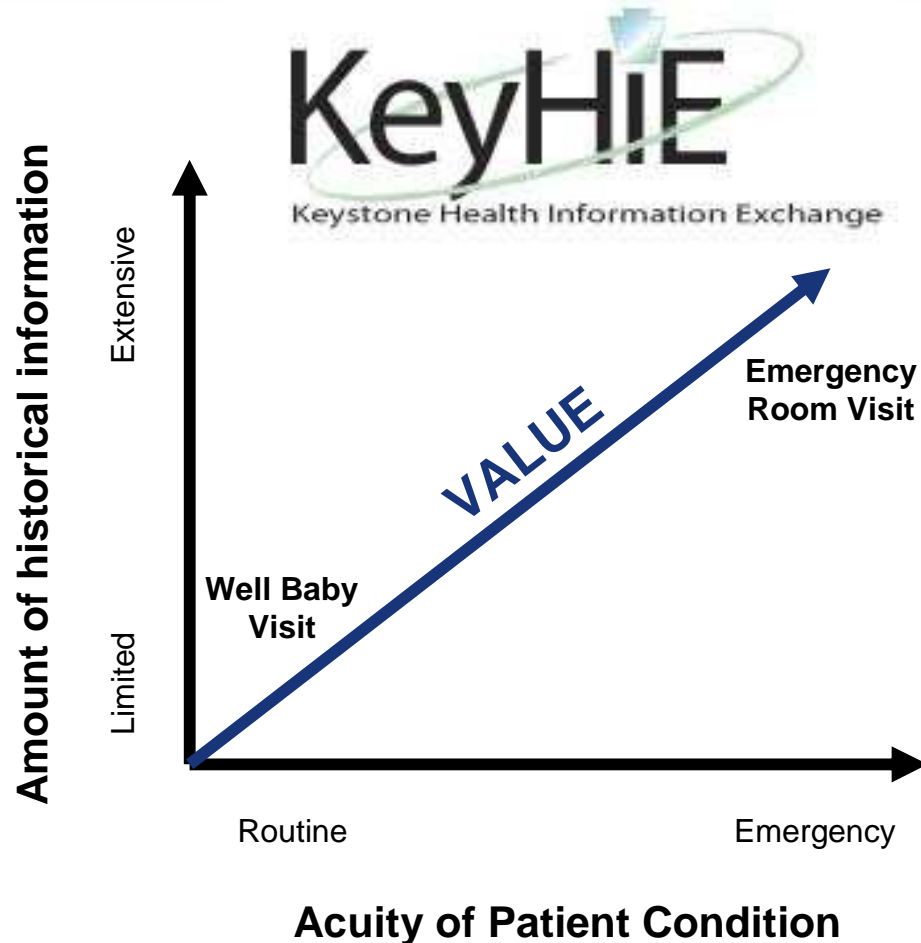
19th Annual HIMSS Leadership Survey

- ▶ A focus on **quality of care** drives the implementation of clinical information systems, technology to reduce medical errors and an EMR.
- ▶ **Security is a top priority**: nearly 1 in 4 reported a security breach in the last year. **Identity management and security technologies are top technologies** that will be implemented by healthcare organizations in the next two years.
- ▶ Healthcare organizations are **accelerating investments** in technologies, which allow better understanding, analysis and **accessibility** of clinical knowledge.

Major Objectives for Geisinger Health System



Studies Demonstrate Information Essential to Patient Care is Unavailable in 15% of Emergency Department Visits

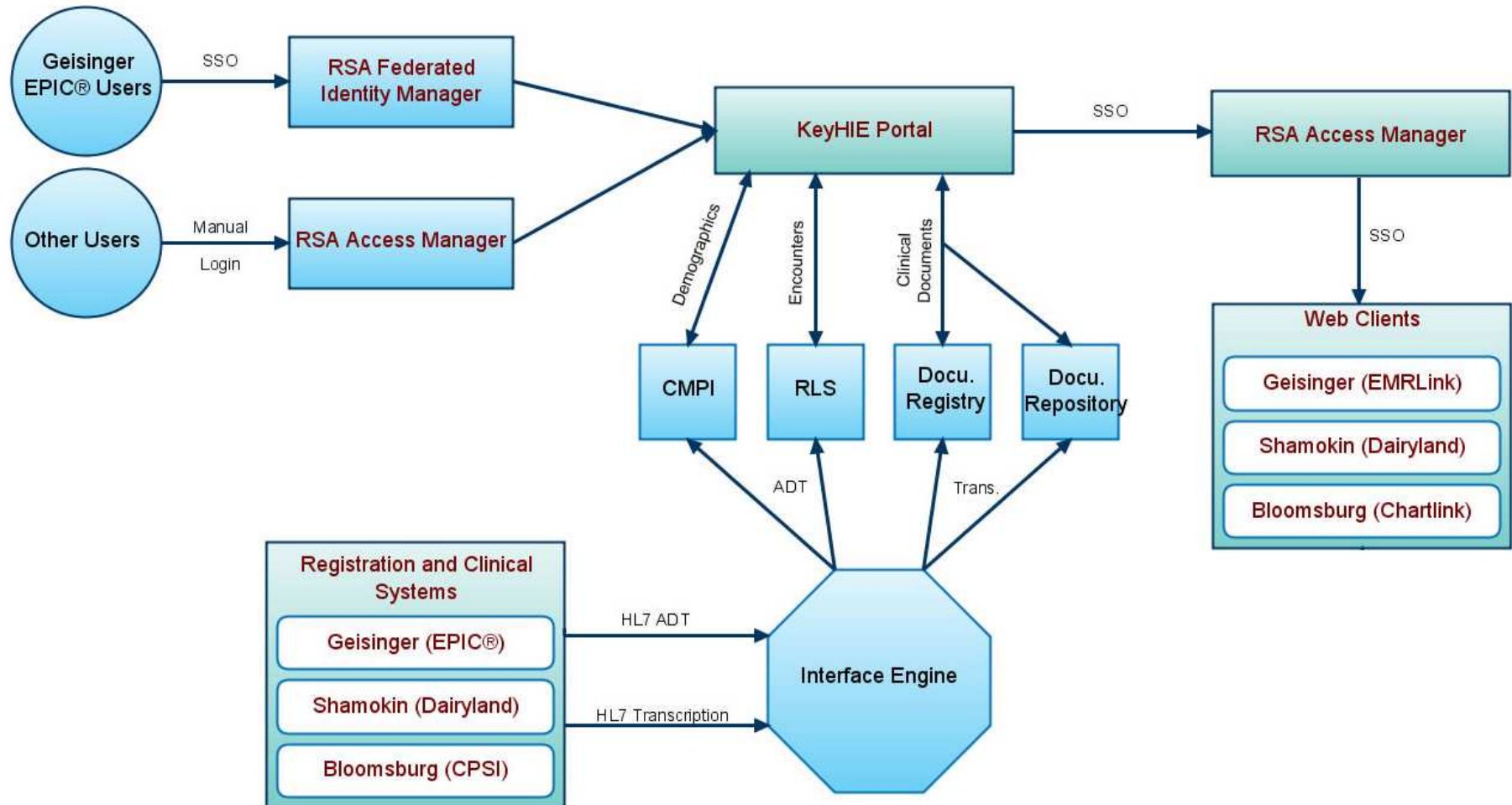


Stiell, A., A. J. Forster, et al. (2003). "Prevalence of information gaps in the ED and the effect on patient outcomes."

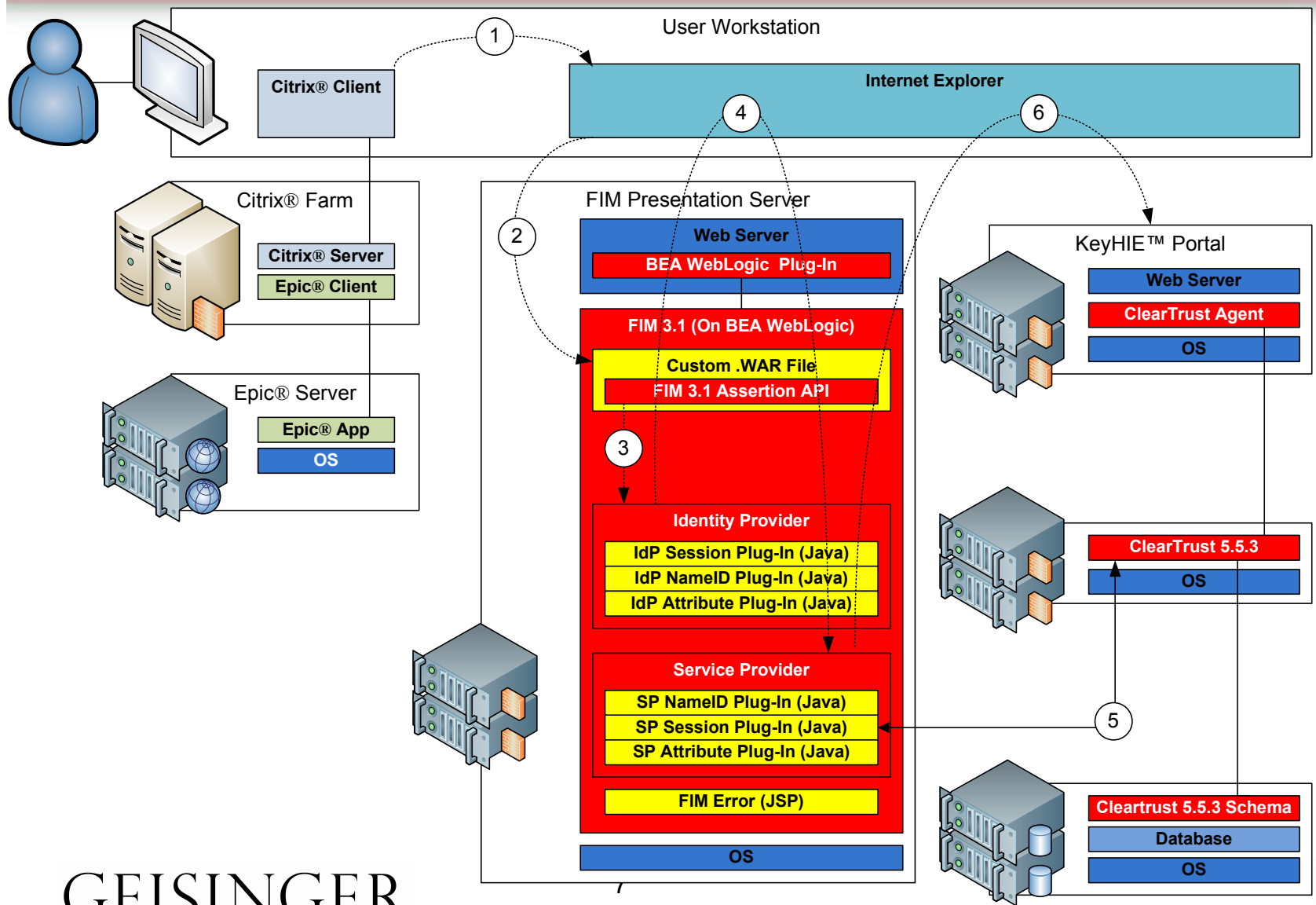
- ▶ Real-time access to patient information
- ▶ Begin small, and build incrementally, enabling hospitals and physicians to learn gradually and identify the business case incrementally
- ▶ Instill Patient confidence
- ▶ Physician use and satisfaction
- ▶ Geisinger 80K ER visit/yr

The KeyHIE Infrastructure

Keystone Health Information Exchange



Federation is the Business Enabler



GEISINGER



What's Next?

- ▶ Continued leadership in developing a self-sustaining Pennsylvania-wide Health Information Exchange
- ▶ Add additional meaningful patient data such as the proposed standardized Document Registry and Repository
- ▶ Continue to bring new hospital partners into the Exchange (Initial goal of 53)
- ▶ Keep ongoing focus on security and privacy and utilize Identity Federation & Data Exchange standards
- ▶ Develop/Monitor Exchange Usage Statistics
- ▶ Have fun doing it !!!





The Security Division of EMC

Thank you!