



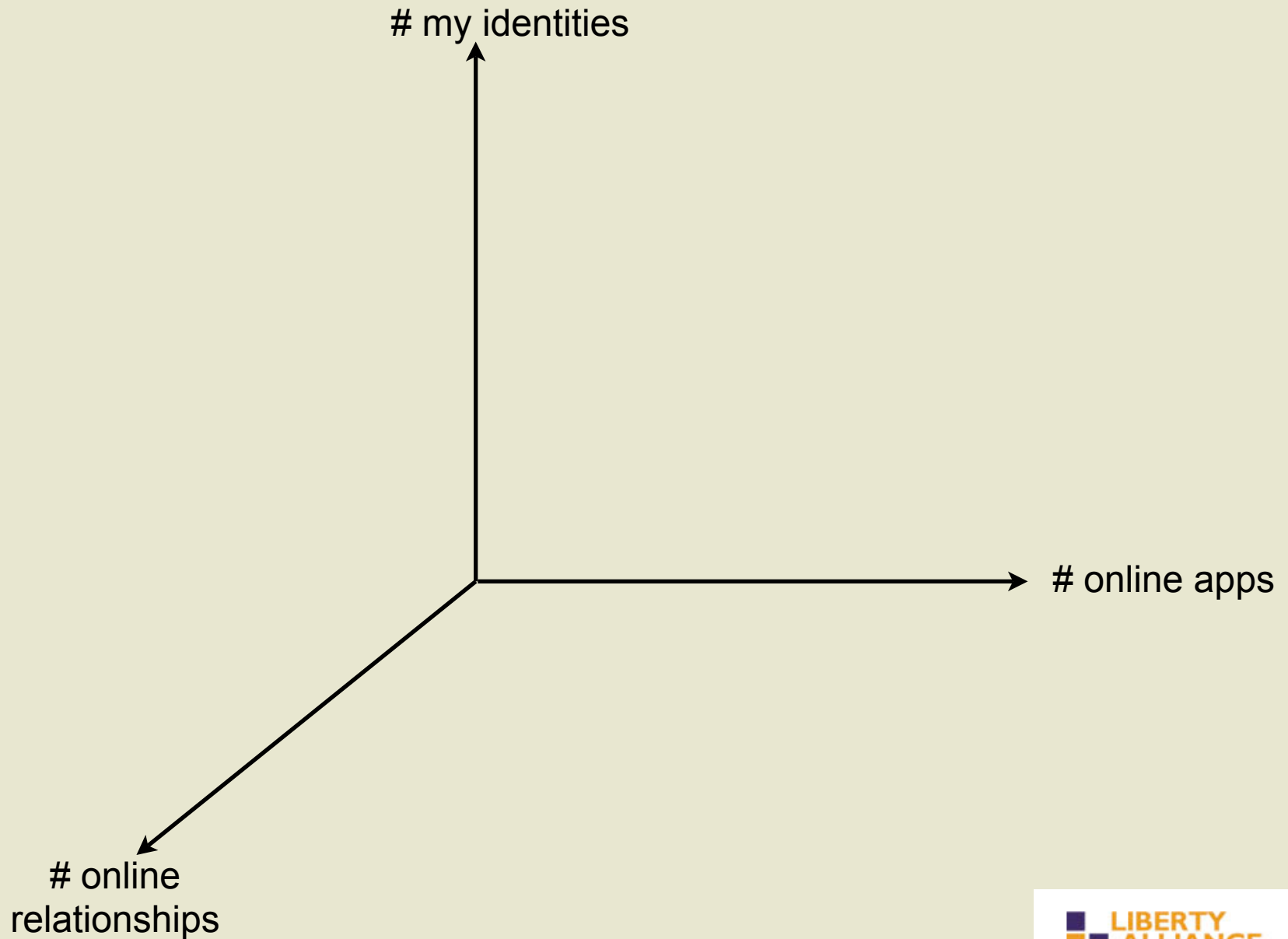
People Service

Hubert A. Le Van Gong
Architect - Sun microsystems

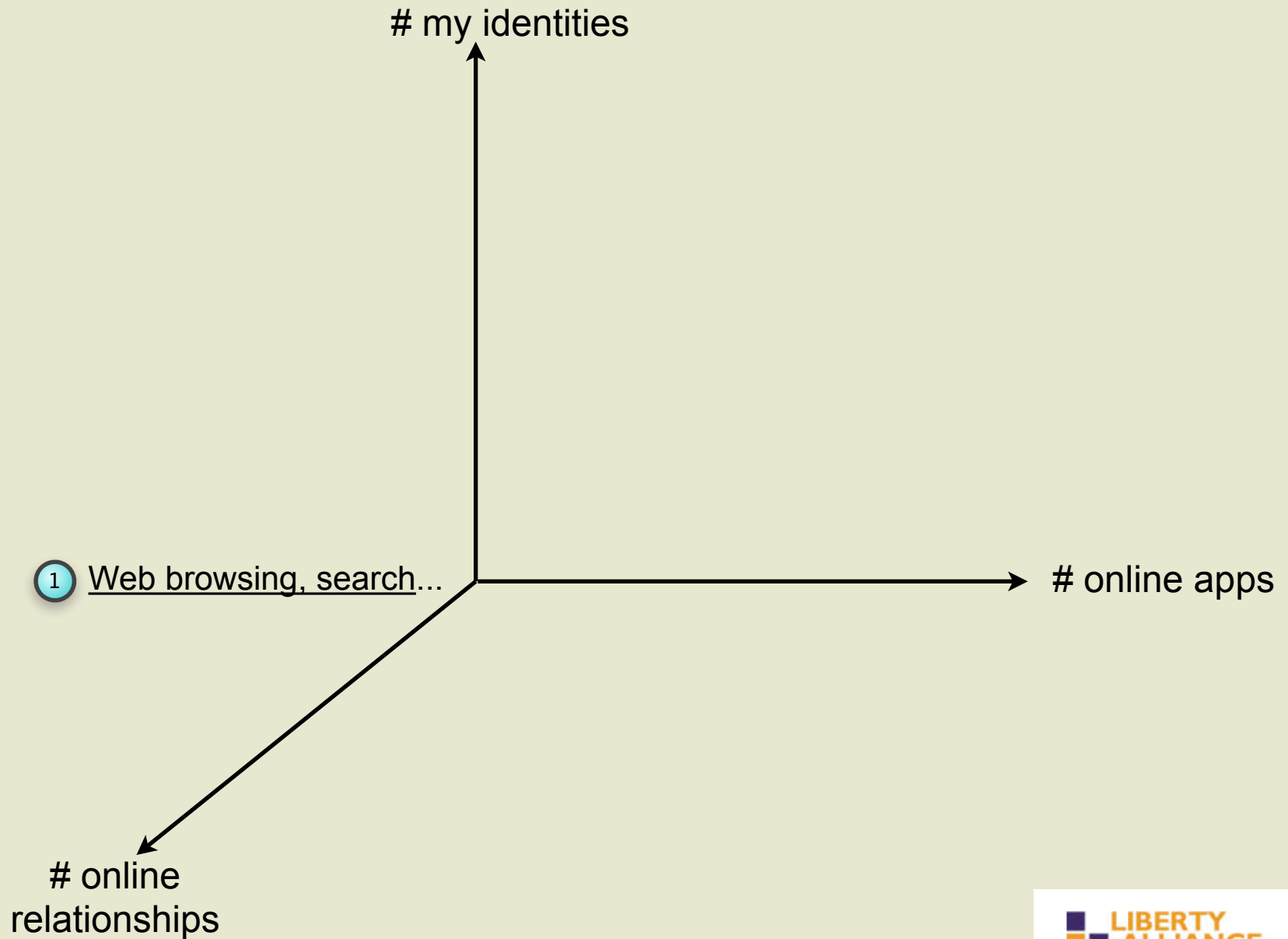
Outline

- Evolution & issues
- People Service
- Scenarios
- People Service & Liberty

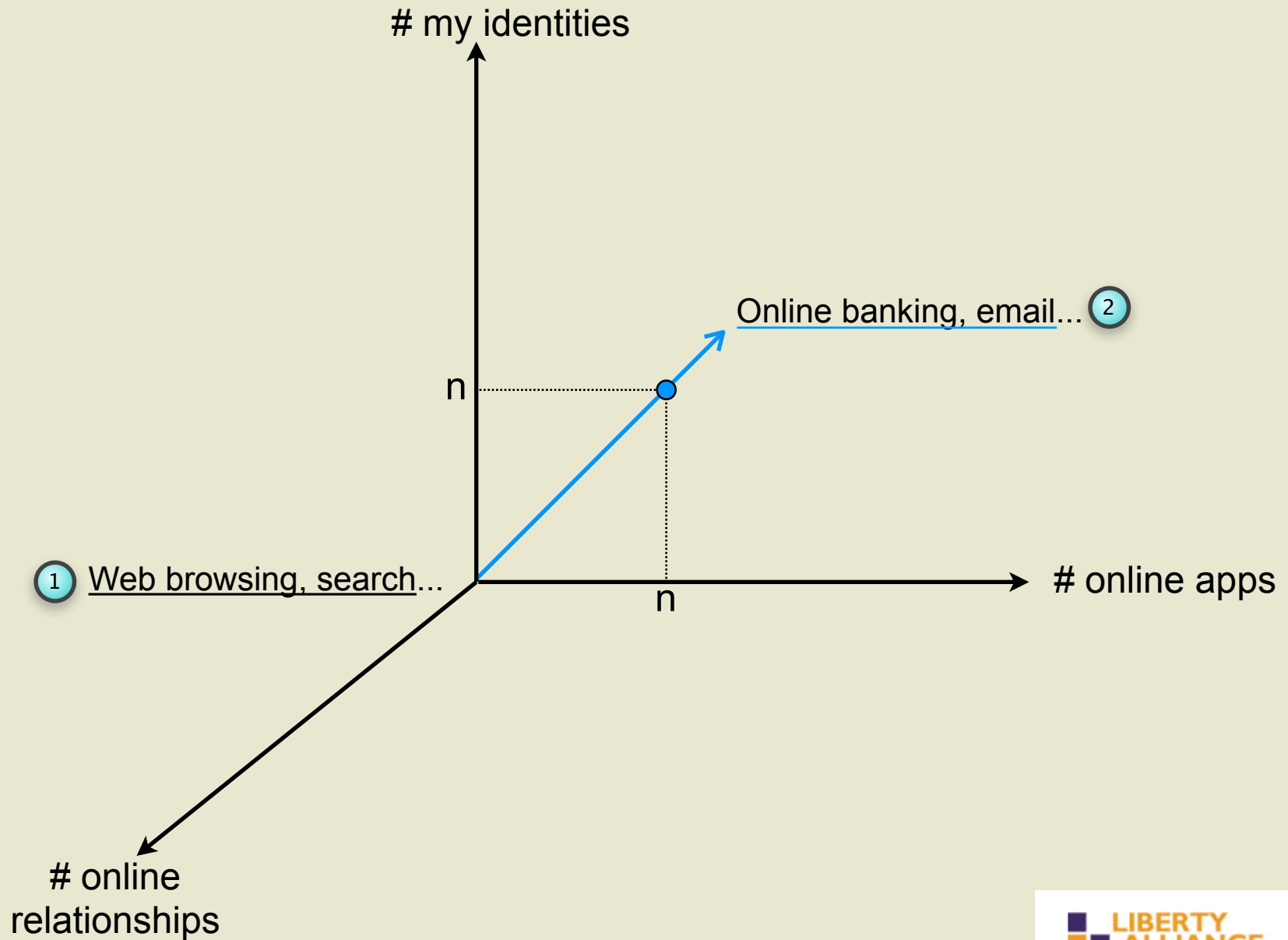
Evolution & Issues



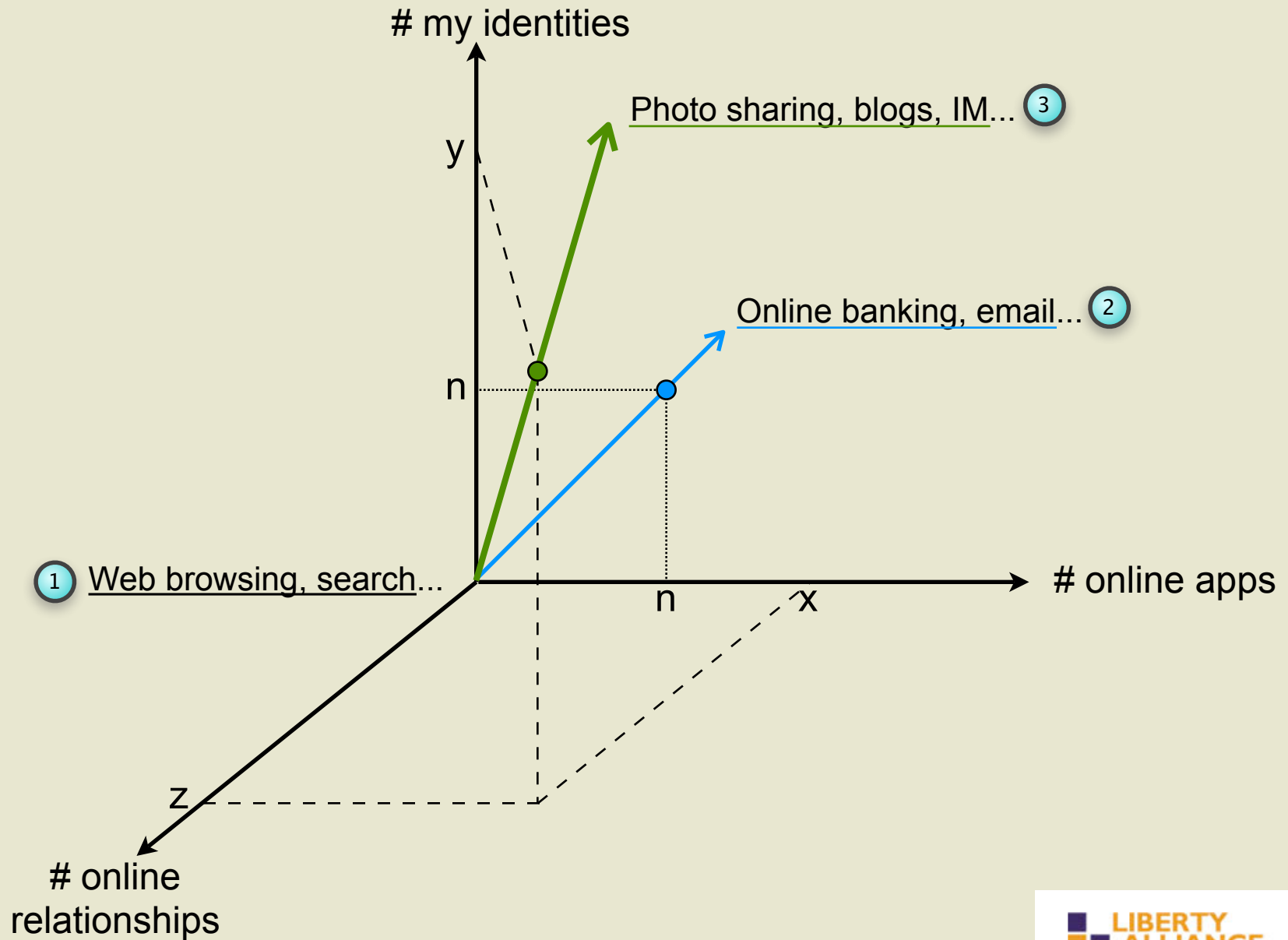
Evolution & Issues



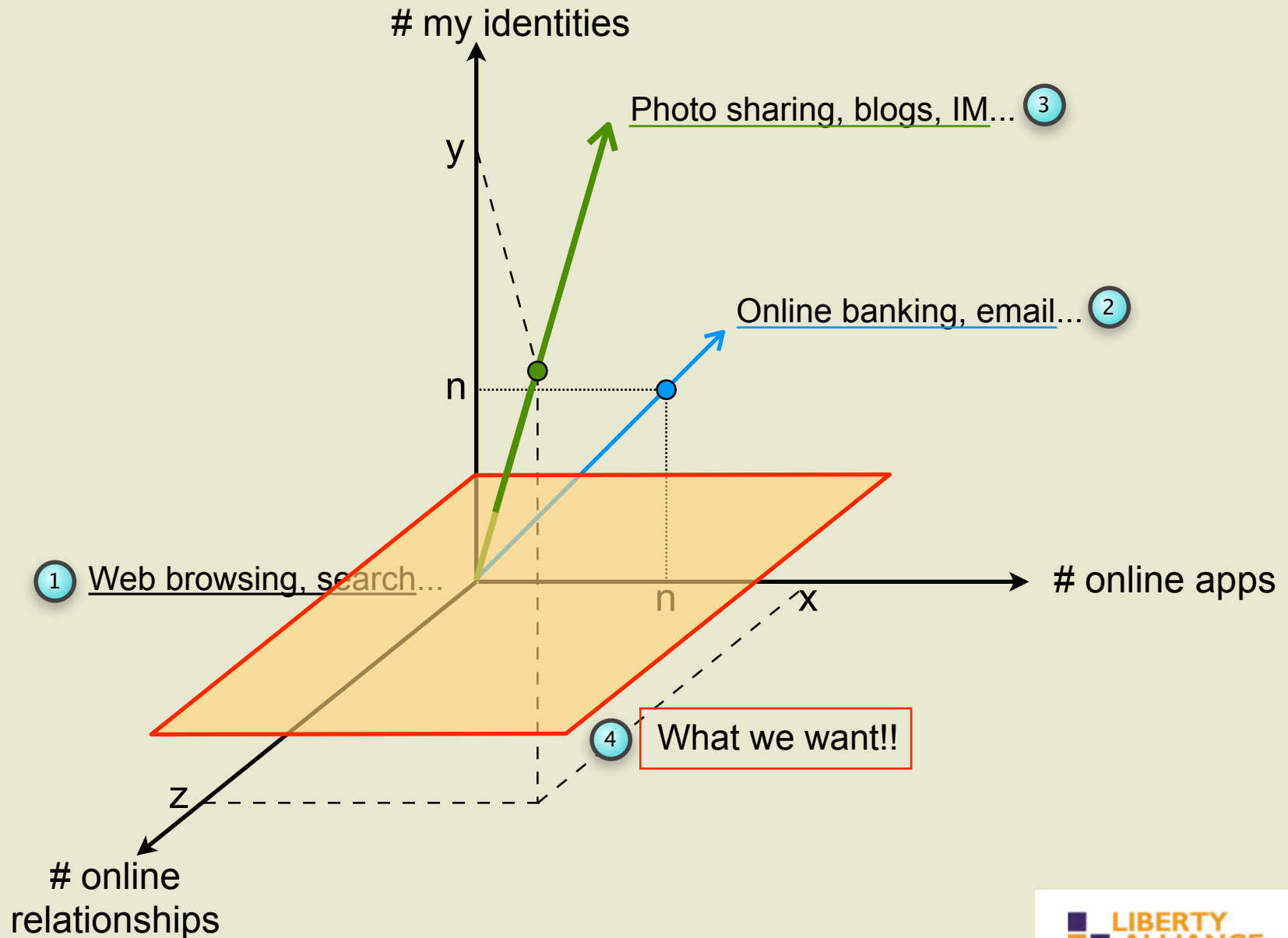
Evolution & Issues



Evolution & Issues



Evolution & Issues



Evolution & Issues

What's wrong with today's sharing services?

- ➔ Most require both the invitee and the invited persons to have an account at the same sharing service (e.g. photo sharing)
- ➔ Or they rely on a global identifier (e.g. email address)
- ➔ The connection between these 2 individuals cannot be leveraged in other sharing services. It has to be re-established.
- ➔ The only social network based services that can survive are the biggest ones. Limiting factor to innovation.

Evolution & Issues

What's wrong with today's sharing services?

- ➔ Most require both the invitee and the invited persons to have an account at the same sharing service (e.g. photo sharing)
- ➔ Or they rely on a global identifier (e.g. email address)
- ➔ The connection between these 2 individuals cannot be leveraged in other sharing services. It has to be re-established.
- ➔ The only social network based services that can survive are the biggest ones. Limiting factor to innovation.

Enters...

People Service

People Service

- People Service is about:

Granting access rights to resources or services to friends and colleagues.

- To achieve this a user needs:

To be able to assign privileges to a relevant identifier for that friend or colleague as supplied by an appropriate identity provider.

- So People Service:

Holds information about the users that have some online relationship with the PS' owner.

People Service

- So what is People Service?
 - A service associated to a user
 - A framework that's flexible and privacy respecting to manage the people a user interacts with
 - An interface for providers (SOAP) to query/manipulate information about a person's friends & colleagues
- It also enables further evolution for online transactions
 - From single-user (online banking...) to cross-user interactions (i.e. multiple identities).

People Service

Several pieces to put together:

- People Service
- Invitations, Identity Federation
- Identity Mapping
- Groups

People Service - Interface

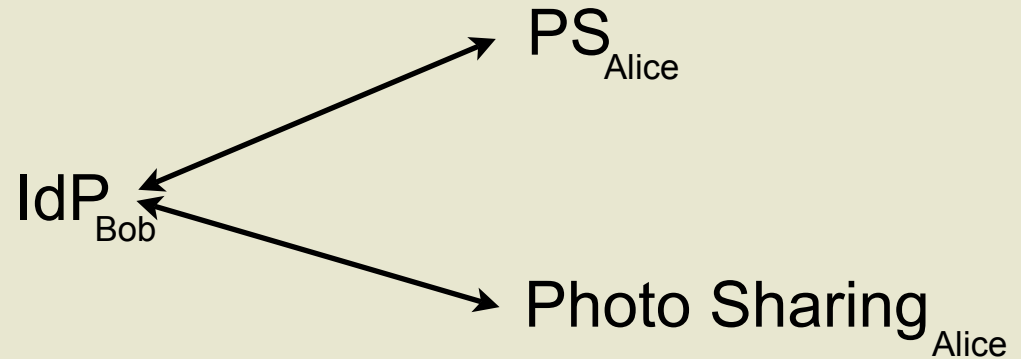
SOAP Interface: a Web Service Consumer can

- Add people or groups
- Retrieve information about people
- Update information about people or groups (e.g. DisplayName...)
- Query the list of entities (friends, coworkers...)
- Test group membership of a user
- Obtain identity tokens for desired members in order to with other providers about that user

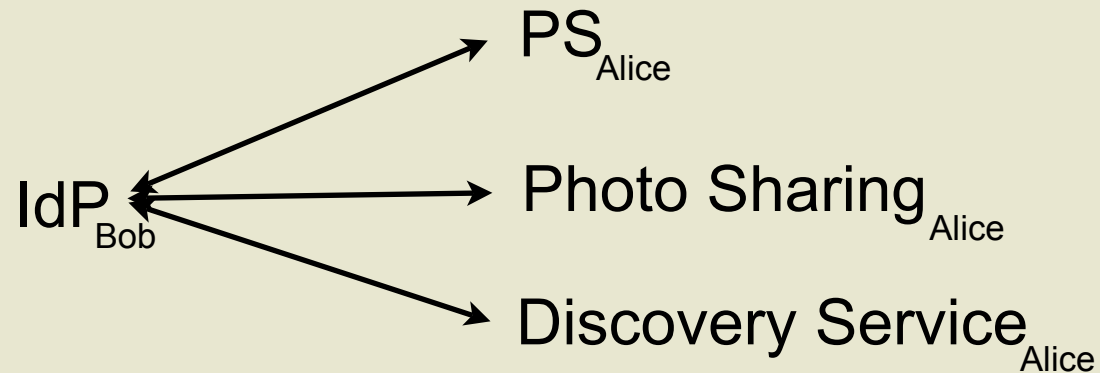
People Service - Invitation

Before adding Bob to Alice's PS, additional federations may be required (providing obtention of consent):

Sharing a web-based resource (online photos)



Sharing an identity service (geolocation service)



People Service - Identity Tokens

- A solution to refer to people when they are not present (i.e. authenticated)
 - Adding 5 people to my PS
 - Me accessing you PS
- A security token that is used to convey an identity as opposed to both an identity and an authentication context (long-lived, conveyed in SAML2 assertion for instance)
- Can provide bootstrap information (DS Endpoint reference)
- Token policy to express requirements about the expected ID token (long/short lived, federated/transient...)

People Service - Objects

People Service contains objects that represent

- Individual users
- Groups created by the owner (e.g. my soccer buddies) that contain either individuals or groups

An <Object> contains:

- Some object info
 - type, object ID, creation date...
- Human readable name (DisplayName)
- Reference to other object(s)
- Identity token(s)
- Tag for metadata

<Use Cases>

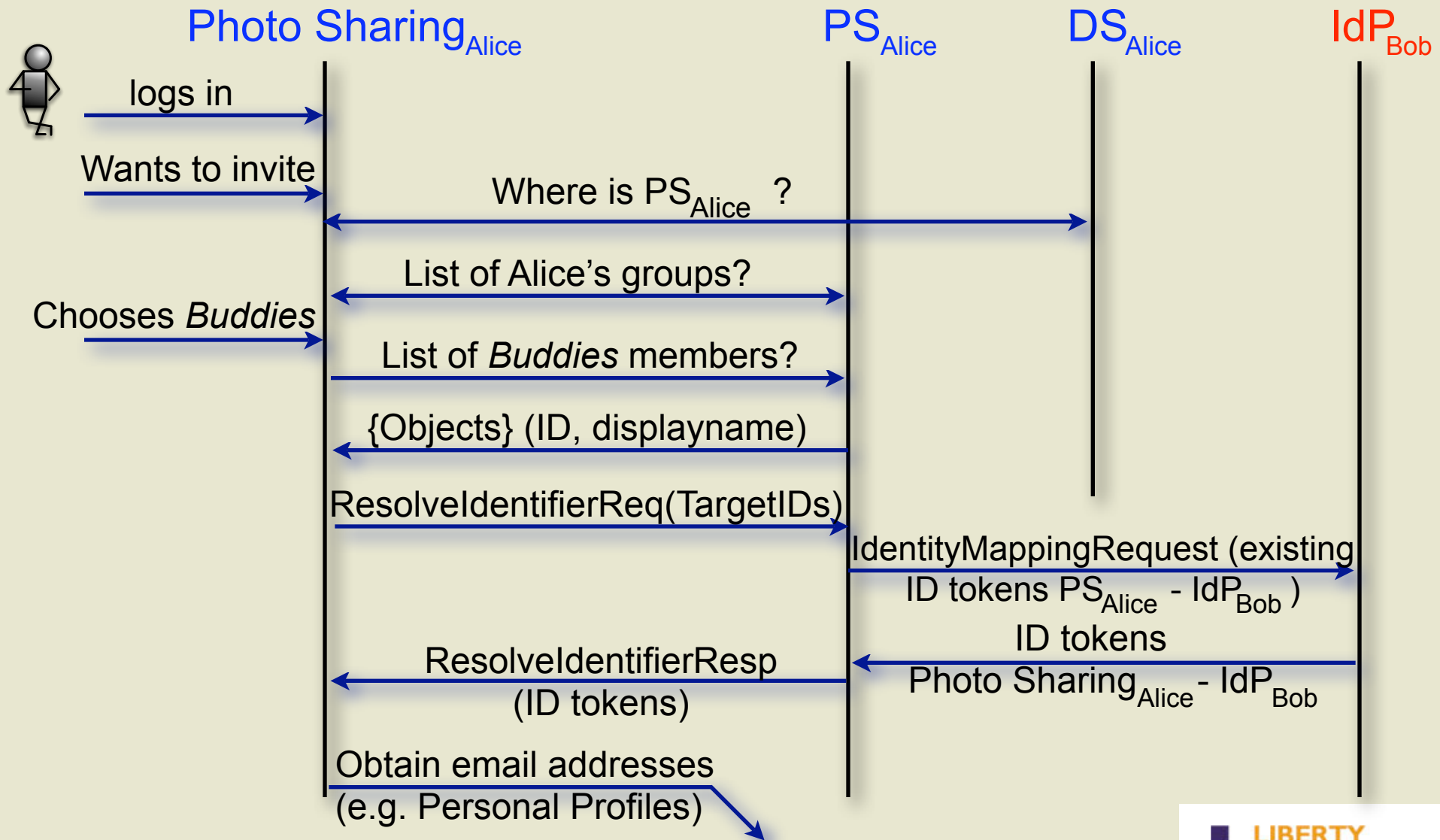
Use Case #1

Scenario: controlling access to a resource through group membership test.

- Alice has created a group of friends (*Buddies*) at her PS - Bob is in...
- She visits her Photo Sharing web site and wants to send invitations to people in her *Buddies* group to admire her photos.

How is the Photo Sharing going to send the invitations?

Use Case #1



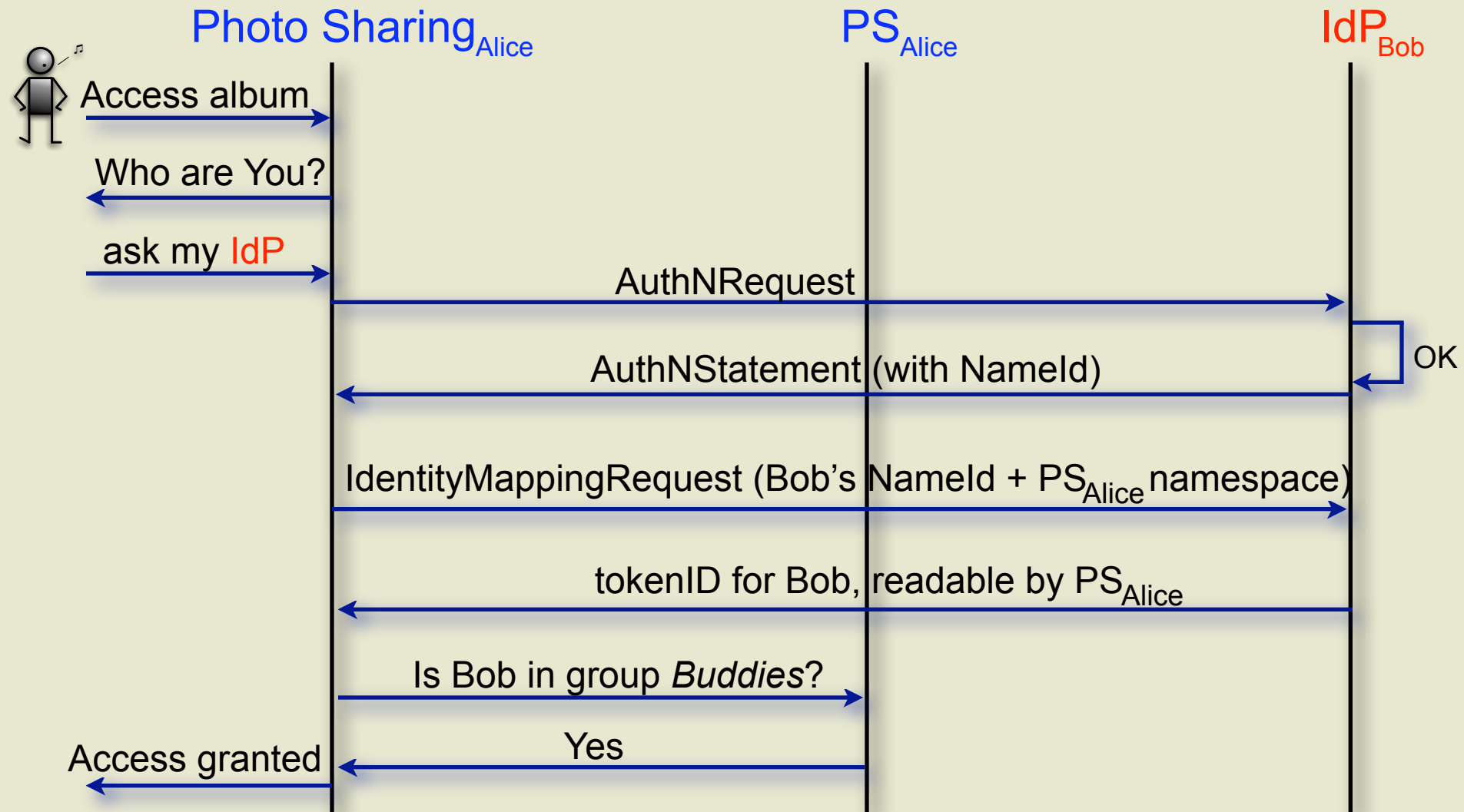
Use Case #2

Scenario:

- Alice has created a group of friends (*Buddies*) at her PS - Bob is in...
- She has indicated to her online photo service that members of *Buddies* can view her latest photo album
- She has sent an invitation to Bob

Bob has just received the invitation...

Use Case #2



</Use Cases>

People Service and ID-WSF

- To find a user's PS a web service will use the **Discovery Service**
- To authenticate and obtain the identity of an invitee, a web service will use the **Identity Provider** (+ Authentication Service & Identity Mapping Service)
- ID tokens based on **Liberty Authentication, SSO & ID mapping** spec
- **Federation** between services needs to be established.

Summary

People Service is about:

- Enabling users to manage their social network in a cohesive manner
- Allowing a cross social contexts use of a connection between 2 individuals
- Preserving privacy for all involved parties
- Supporting SOAP-based sharing of resources

More information:

- https://www.projectliberty.org/resources/whitepapers/Liberty_Federated_Social_Identity.pdf

Thank You!